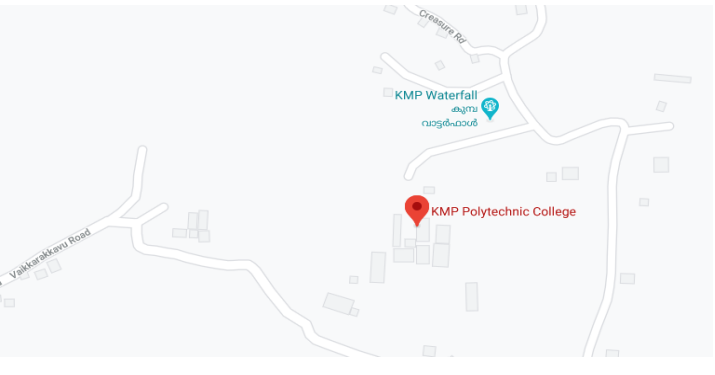


MANDATORY DISCLOSURE

1	AICTE File No.	I-456457381
2	Name of the Institution	K M P POLYTECHNIC
	Address of the institution	Asamannoor. P.O, Perumbavoor, Ernakulam, Kerala
3	Longitude and Latitude	Latitude 10°05'40.1"N Longitude 76°32'41.5"E
		
	City & Pin code	Asamannoor P.O, 683549
		Perumbavoor, Ernakulam
	State	Kerala
	Phone No with STD code	0484 2958401
	Fax No	
	Office Hours of the Institution	9 AM to 4 PM
	Academic Hours of the institution	9 AM to 4 PM
	Email	info@kmppoly.org
	Website	www.kmppoly.org
	Nearest Railway Station (dist in Km)	Aluva –(23 KM Distance)
	Nearest Airport (dist in Km)	Cochin International Air Port (24 KM DISTANCE)
3	Type of institution	Self Financing
	Category (1) of the Institution Non Minority/Minority specify minority	Minority Muslim
	Category (2) of the institution	General
4	Name of the organization/Trust running the institution	Indira Gandhi Memorial Trust
	Type of the Organization	Trust
	Address of the Organization	Indira Nagar, Nellikuzhi, Kothamangalam, Ernakulam,

		Kerala		
	Website of the Organization	www.iggis.org		
5.	Name of the Principal	M.S. Revikumar		
	Exact Designation	Principal		
	Phone No with STD Code	0484 - 2958401		
	Fax No with STD code	0485 -		
	Email	Revikumar_ms@yahoo.com		
	Highest Degree	B. Tech		
	Field of specialization	Electrical & Electronics		
6	Academic Advisory Body	Academic Committee		
	Frequency of meetings & date of last meeting	monthly		
7	Student Feedback mechanism on	Collected		
	Institutional Governance/faculty performance	Collected and stored by respective Head of Department		
8	Grievance redressal mechanism for faculty, staff and student	Grievance Cell		
9	Name of the Department	Department of Civil engineering Department of Mechanical Engineering Department of Electrical & Electronics Engineering Department of Automobile Engineering Department of Chemical Engineering		
	Course	Diploma in Civil Engineering Diploma in Mechanical Engineering Diploma in Electrical and Electronics Engineering Diploma in Automobile Engineering Diploma in Chemical Engineering		
	Level	Diploma		
	1 st Year of approval by the Council	2018		
	Year wise sanctioned intake	CAY 2020-21	CAY -1 2019-20	CAY-2 2018-19
	Civil Engineering	60	60	60
	Mechanical Engineering	60	60	60
	Electrical and Electronics Engineering	60	60	60
	Automobile Engineering	60	60	60
	Chemical Engineering	60	60	60
	Year wise Actual Admission			
	Civil Engineering	30	38	35
	Mechanical Engineering	37	58	59
	Electrical and Electronics Engineering	36	57	43
	Automobile Engineering	45	41	48
	Chemical Engineering	43	66	55
	Cut off marks-General Quota			
	Civil Engineering	74578	91432	
	Mechanical Engineering	71473	99565	

	Electrical and Electronics Engineering	73523	92616	
	Automobile Engineering	73108	89119	
	Chemical Engineering	70875	72580	
	Year wise Actual Admission			
	Cut of Marks – Management Quota			
	Civil Engineering	77	(3.616667)	
	Mechanical Engineering	73	(4.133333)	
	Electrical and Electronics Engineering	63	(4.5625)	
	Automobile Engineering	75	(3.85)	
	Chemical Engineering	68	(4.35)	
	% student passed with Distinction			
	% Student passed with First Class			
	% Student passed with Second Class			
	Student Placed	CAY *	CAY -1	CAY-2
	Civil Engineering			
	Mechanical Engineering			
	Electrical and Electronics Engineering			
	Automobile Engineering			
	Chemical Engineering			
	Average pay pack per year			
	Accreditation Status of the Course	Preliminary		
	Doctoral course	No		
	Distinguished Alumni	--		
10	Name of Teaching Staff	Details are Available in http://info@kmppoly.org		
	Consultancy Activity	--		
11	Admission quota			
	Entrance Test/admission Criteria State Merit	State wise Rank List based on SSLC/CBSE/THSLC (70% Mark average of Mathematis, Physics and Chemistry) + 30 % mark average of other subjects in the qualifying Examination) www.polyadmission.org		
	Management Merit	(70% Mark average of Mathematis, Physics and Chemistry) + 30 % mark average of other subjects in the qualifying Examination)		
	Cut off/ last candidate admitted	CAY	CAY-1	CAY-2
		Details give in Annexure 1		
	Fee State Merit			
	Fees in Rupees	CAY	CAY-1	CAY-2
	Admission fee	200	1000	1000
	Affiliation Fee	1575	1500	1500
	Tuition fee	22500	22500	22500
	Special Fee	2500	2500	2500
	Caution Deposit	5000	5000	5000

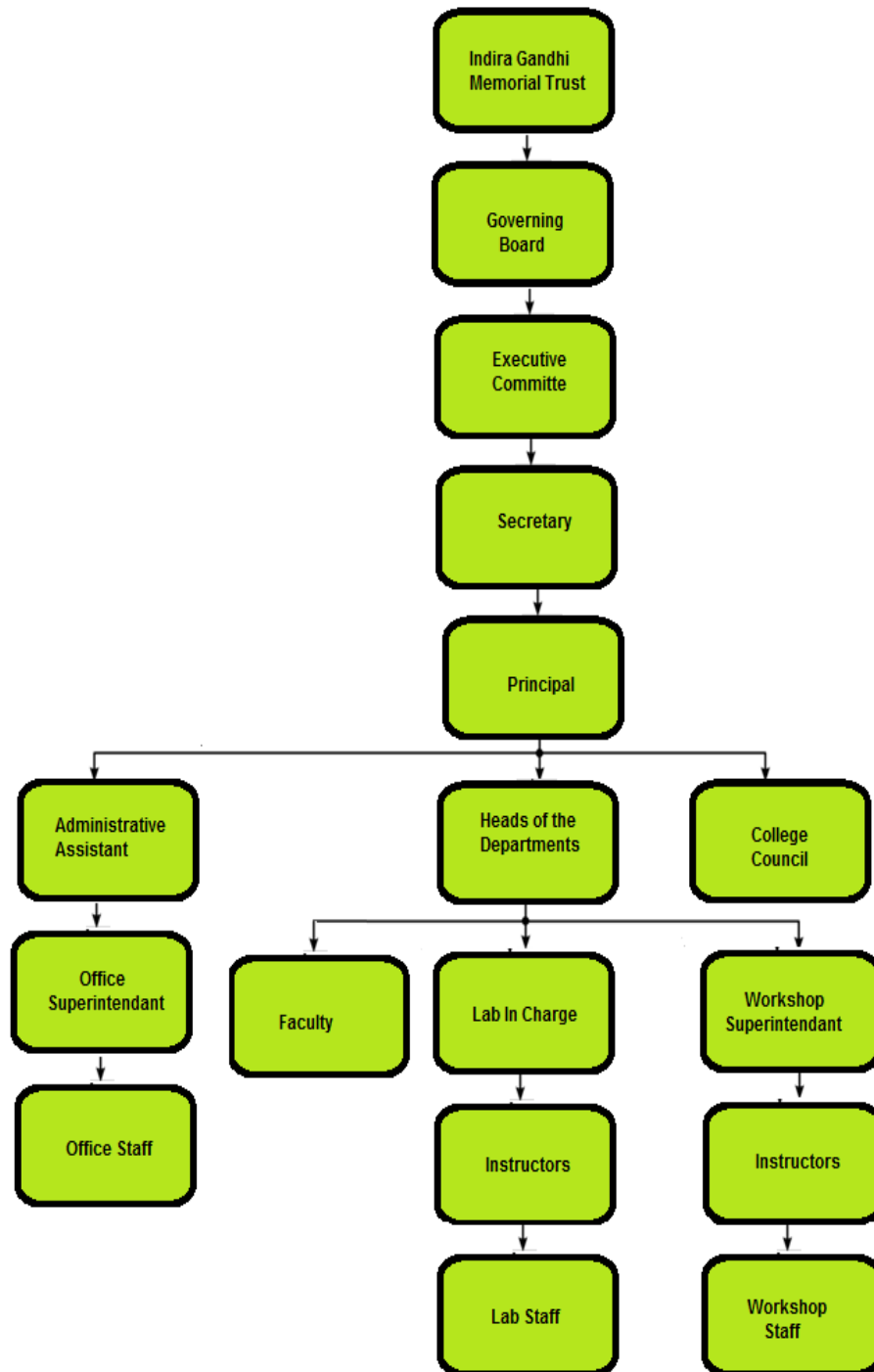
	Establishment Fee	1000		
	Total	32775	33000	33000
	Fee Management			
	Fees in Rupees	CAY	CAY-1	CAY-2
	Admission fee	1000	1000	1000
	Affiliation Fee	1500	1500	1500
	Tuition fee	37500	37500	37500
	Special Fee	2500	2500	2500
	Caution Deposit	5000	5000	5000
	Establishment Fee	1000	1000	1000
	Total	48500	48500	48500
	Number of Fee Waivers offered	CAY	CAY-1	CAY-2
		8	0	0
	Admission Calender	Document\Academic_Calender.pdf		
	PIO Quota			
12	Infrastructural Information			
	Class Room/Tutorial Room	14 Class Room 2 Tutorial Room 1 Drawing Hall		
	Laboratory details	Basic Science Lab - 2 Nos Electrical Lab - 5 nos Mechanical Lab - 5 Nos Automobile Lab - 5 Nos Civil Lab - 5 Nos Chemical Lab - 5 nos WorkShop - 2 Nos		
	Computer facilities	Computer Center, Language Lab, Chemical CAD Lab, Electrical CAD Lab, STAD/CAD Lab, Auto/ Mechanical CAD Lab		
	Library Facilities	300 Sq.M More than 3500 books		
	Auditorium/Seminar Hall/ Am phi Theater	Auditorium Seminar Hall – 1 No		
	Cafeteria	Yes		
	Indoor Sports Facility	Yes		
	Outdoor Sports Facility	Cricket, Football, Shuttle Badminton		
	Gymnasium facility	----		
	Ladies Waiting Room	1 No		
	Boys Waiting Room	1 No		
	Prayer Hall	1 No		
	Any Other Facility	Transportation Facility		
13	Boys Hostel	Yes		
	Girls Hostel	Under Construction		
	Principal Quarters	Yes		
14	Academic Section			
	Examination System, Year/Semester	Semester System Examination conducted by JCTE www.sbte.kerala.gov.in		

		Odd Semester Oct/Nov Even Semester Mar/April
	Period of declaration of Result	December /May
15	Counseling / Mentoring	Counseling Convener : Mrs. Theresa Mentoring : Mrs. Anet
	Carrier Counseling	Carrier Guidance and Placement Cell Coordinator : Paul V Kunnel Lr. Mechanical
	Medical Facilities	First Aid PHC Situated within one Km away from college
16	Student Activity Body	
	Cultural Activity	Cordinator :Miss.Ashni V S
	Sports Activity	College Sports & Inter Polytechnic Meet Physical Instructor: Jishin P A
	Literary activity	Debate club
	Technical activities	Department associations arranged technical talks
	Alumni Activities	Not Started

COURSES OFFERED

SL.No	Name of the Course	Sanctioned Intake(seats)
1	Diploma in Mechanical Engineering	60
2	Diploma in Automobile Engineering	60
3	Diploma in Electrical and Electronics Engineering	60
4	Diploma in Chemical Engineering	60
5	Diploma in Civil Engineering	60

Organizational Chart



Governing Body

Sl. No	Designation	Name and Contact Details	Educational qualifications
1	Chairman	K M Pareeth PH:9447136101	
2	Vice Chairman	SAIREJ K.P PH:9495943439	
3	Director Nominated by the society / trust	Shibu K.P	
4	Secretary Member Nominated by the society / trust	Dr. Shias K.P	
5	CEO Nominated by thesociety / trust	Dr. Siyad K.P	
6	Member Nominated by the society / trust		
7	Member Nominee of AICTE / regional officer	Dr. Ramesh Unnikrishnan Director, Regional Office, AICTE Thiruvananthapuram Ph: 04712596363 Email: aicte.tvpm@gmail.com	Ph D
9	Member Nominee of University	Dr. G P Padmakumar Registrar, APJ Abdul Kalam Technological, University, Thiruvananthapuram Ph: 04712598822 Email: registrar@ktu.edu.in	Ph D
11	Principal of the institution	SRI M.S. Revikumar	

12	Member Faculty of the Institution, nominated by Principal		
13	Member Faculty of the Institution, nominated by Principal		
Frequency of meetings		Twice in a year	
Date of last meeting			

Academic Advisory Body	Yes
Frequency of meetings	Twice in a year
Date of last meeting	
Student feedback mechanism on Institutional Governance/faculty performance	Feedback is taken in every semester
Grievance redressal mechanism for faculty, staff and students	Available

Academic Council

1. M.S. Revikumar, Principal
2. Valsala V K, HoD, Department of Chemical Engineering
3. Dany Bose, HoD, Department of Mechanical Engineering
4. Feeba George, HoD, Department of Civil Engineering
5. Basil M George, HoD, Department of Automobile Engineering
6. Muhammed Ahraz HoD, Department of Electrical & Electronics Engineering
7. Anilkumar Lr. Physics
8. Theresa Lr. English
9. Binila Ir. Ele
10. Paul V Kunnel Lr. Me
11. Mansoor Ali Lr Au

Grievance Redressal Committee

1. Mr. M. S. Revikumar - Principal – Chairperson
2. Mr. Akhil S – Lecturer – Convener
3. Mrs. Valsala – HOD Chemical – Member
4. Mr. Dany Bose – HOD Mechanical – Member
5. Mr. Aboobacker Ahraz A K – HOD Electrical & Electronics Member
6. Mr. Godwin Johnson – Student 2nd Yer Electrical – Special Invitee

Important Facilities Available

College Library

Education system should be integration and co-ordination between the classroom and the library, which brings out the fruitful result in building up the overall development of the personality of the student. The library system consists of a central library and other department libraries. All students, faculty members and employees are entitled to avail the facilities of the Central Library after enrolling themselves for a membership. The library consists of textbooks by reputed authors, E journals, newspapers and magazines. The library is managed by fully qualified and experienced library professionals.

Internships/Industry Visits

Industrial visits are an integral part of the college curriculum for professional degrees. Its main objective is to offer an insight into the working of a factory or industrial unit. It also provides an opportunity to delve deeper into the realities of an Industrial house. The institution encourages students to conduct industrial visits on a regular basis. As per the syllabus, each student shall undergo internship during the vacation time.

National Service Scheme (NSS)

The programme aims at instilling the idea of social welfare in students, and to provide service to society without bias. NSS volunteers work to ensure that everyone who is needy gets help to enhance their standard of living and lead a life of dignity. In doing so, volunteers learn from people in villages how to lead a good life despite a scarcity of resources. It also provides help in natural and man-made disasters by providing food, clothing and first aid to the disaster's victims.

Internal Quality Assurance Cell (IQAC)

Since quality enhancement is a continuous process, the IQAC will become a part of an institution's system and work towards realizing the goals of quality enhancement and sustenance. The motto of the IQAC is to achieve quality through continuous improvement with cooperation of all stake holders. The Internal Quality Assurance Cell gives advice and guidelines to the administration to maintain high quality work in academics and administration. The cell monitors the quality aspects of all the academic and non-academic activities of the institution. The cell works on various accreditation aspects

Functions

- Taking a lead role in undertaking Academic Audit and to give feedback with the purpose of devising quality enhancement programmes.
- Facilitating the creation of a learner-centric environment conducive for quality education and faculty maturation to adopt the required knowledge and technology for participatory teaching and learning process.
- Arrangement for feedback responses from students, parents and other stakeholders on quality related institutional processes.

- Dissemination of information on the various quality parameters of higher education.

Anti-ragging Committee

Anti -Ragging Committee is constituted in the college to prevent ragging and to take anti-ragging measures as per the guide lines issued by the Supreme Court of India Actions will be taken against students for indulging and abetting ragging depending upon the nature and gravity of the offence as established. On admission to the college, each student will be asked to sign the anti- ragging oath form that creates awareness about ragging offences and punishments. The Anti-ragging committee conduct enquiry on complainants and submits report to the Principal. The Principal, if required, forward the complainant to the local police for necessary action against the offender. The committee keeps the records of the complaint and the enquiry report prepared (if any) in all cases.

Women's Cell

Women cell aims at empowering and orienting women to recognize their true potential and to help them attain their own stand in a competing world. Its goal is the overall development in all spheres of their life. The main functions of Women cell are;

- Enable the students and teachers to come to the forefront and maintain a harmonious environment in the institute.
- Create awareness on gender related issues.
- Create a professional learning and working atmosphere in the institute for its students and employees by preventing gender discrimination.

Internal Complaints Committee

An Internal Complaints Committee (ICC) is formed in this institution according to the provisions of the Sexual Harassment of Women at workplace (Prevention, Prohibition and Redressal) Act, 2013.

Student's Grievance Cell

The objective of the Grievance Cell is to develop a responsive and accountable attitude among all the stakeholders in order to maintain a harmonious educational atmosphere in the institute. Grievance Cell facilitates the resolution of grievances in a fair and impartial manner involving the respective Department. The function of the cell is to look into the complaints lodged by any student, and judge its merit. Anyone with a genuine grievance may approach the faculty members in person, or the officer in-charge Students' Grievance Cell.

Students Welfare Committee

The purpose of the Welfare committee is to promote student welfare, advice and support. We achieve this by campaigning on various welfare issues, as well as by working with student-led services. Under this committee, a counselling cell is provided with counsellor to mentor students having family problems and other issues so as to improve their mental as well as physical well-being.

Parent Teachers Association(PTA)

The PTA aspires for co-operation and participation of parents in full measure, in the wholesome activities of the college. . The PTA has been focusing on the growth and development of the college since its inception. It actively involves in training and placement, also provides financial support to economically backward students.